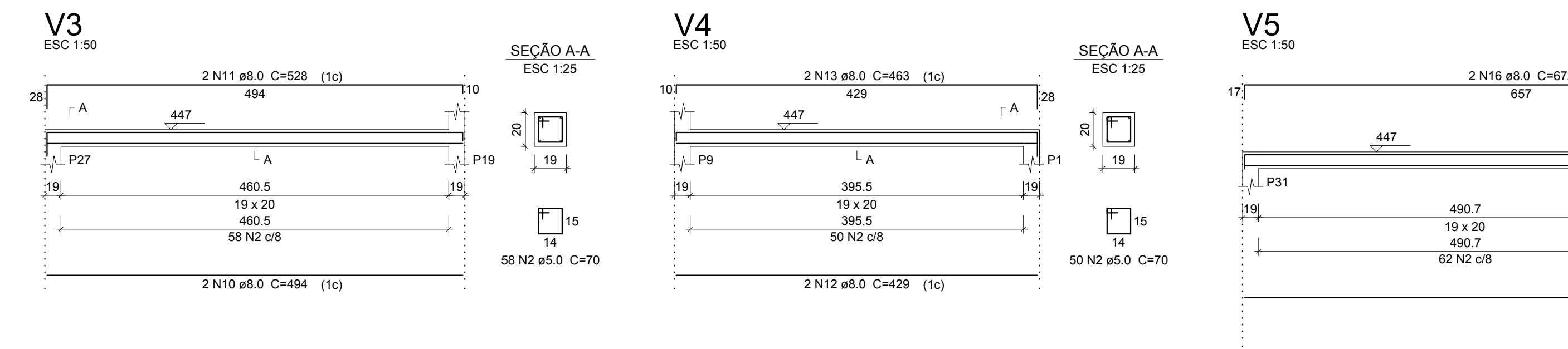
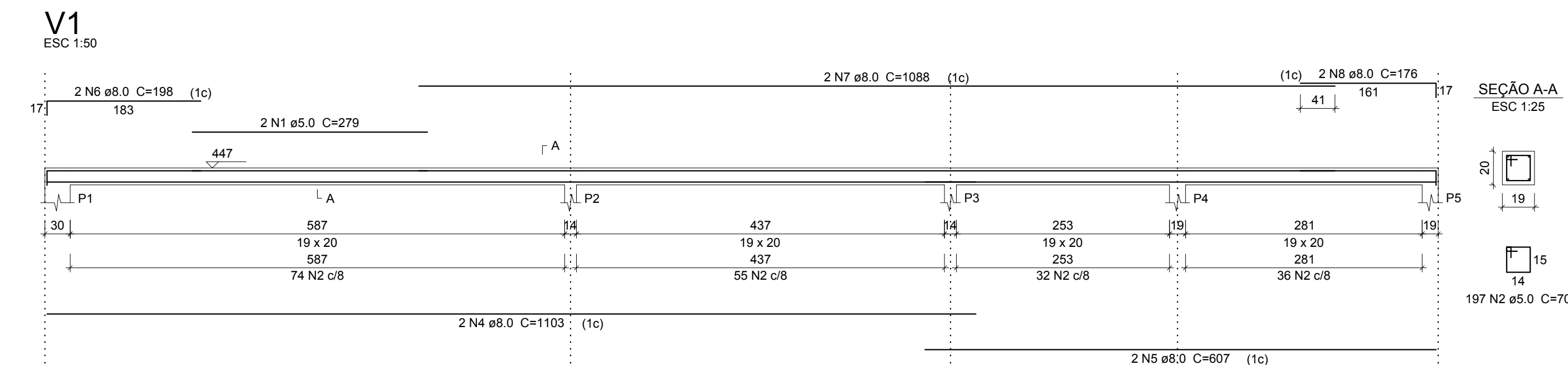
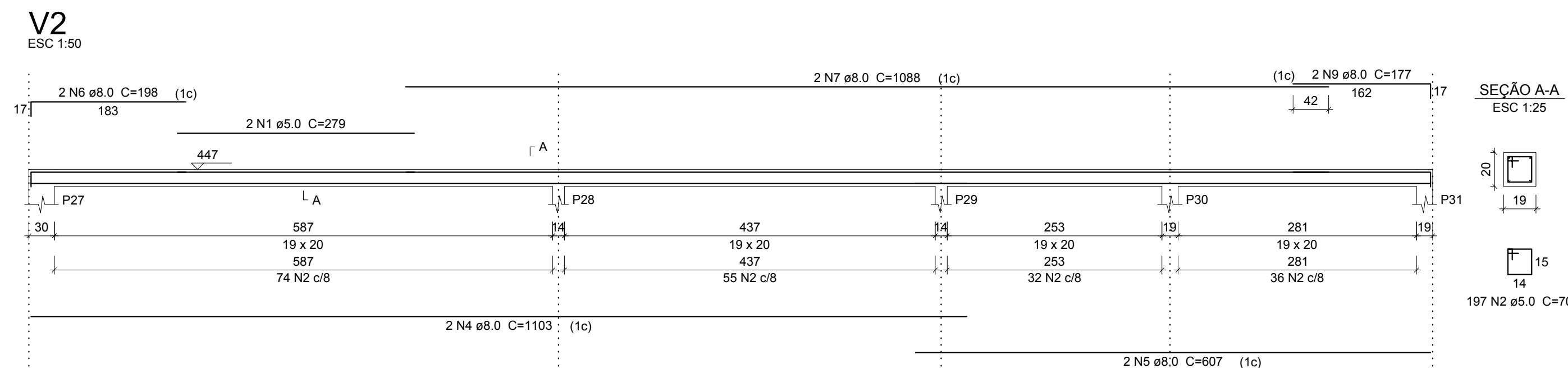


V19 V22	V20 V23		V21 V24	
AÇO	N	DIAM (mm)	QUANT	C.UNIT C.TOTAL
CA60	1	5,0	12	120
	2	5,0	98	90
	3	5,0	88	80
CA50	4	5,0	64	70
	5	8,0	2	543
	6	8,0	2	583
	7	8,0	2	303
	8	8,0	2	337
	9	8,0	2	557
	10	8,0	2	591
	11	8,0	2	570
	12	10,0	2	300
	13	10,0	2	328
	14	10,0	2	1026
	15	10,0	1	275
	16	10,0	2	1054
	17	10,0	2	570
	18	12,5	2	260
	19	12,5	2	1197
	20	12,5	2	594
				5020
				2394

Resumo do aço

AÇO	DIAM (mm)	C.TOTAL (m)	PESO + 10 % (kg)
CA50	8.0	69.7	30.2
	10.0	57.8	39.2
	12.5	39.3	41.6
CA60	5.0	217.8	36.9
PESO TOTAL (kg)			
CA50	111		
CA60	36.9		


Volume de concreto (C-25) = 1.94 m³
Área de forma = 22.63 m²



Relação do aço					
V1	V2		V3		
V4		V5			
AÇO	N	DIAM (mm)	QUANT	C.UNIT (cm)	C.TOTAL (cm)
CA60	1	5,0	4	279	1116
	2	5,0	686	70	48020
CA50	3	5,0	2	239	478
	4	8,0	4	1103	4412
	5	8,0	4	607	2428
	6	8,0	4	198	792
	7	8,0	4	1089	4352
	8	8,0	2	176	352
	9	8,0	2	177	354
	10	8,0	2	494	988
	11	8,0	2	528	1056
	12	8,0	2	429	858
	13	8,0	2	463	926
	14	8,0	2	1016	2032
	15	8,0	2	517	1034
	16	8,0	4	672	2688

Resumo do aço			
AÇO	DIAM (mm)	C.TOTAL (m)	PESO + 10 % (kg)
CA50	8.0	222.8	96.7
CA60	5.0	496.2	84.1
PESO TOTAL (kg)			
CA50	96.7		
CA60	84.1		

Volume de concreto (C-25) = 2.2 m³
Área de forma = 34.08 m²

	INSTITUTO FEDERAL FARROUPILHA	PRÓ-REITORIA DE ADMINISTRAÇÃO COORDENAÇÃO DE ENGENHARIA E ARQUITETURA Rua Emeraldo, 420 - Faixa Nova - Cambó - CEP 97110-747 - Santo Maria - Rio Grande do Sul. Telefone: (51) 3224-4630
OBRA:	SALAS DE AULA E SANITÁRIOS/VESTIÁRIOS	
LOCAL:	IF FARROUPILHA - CAMPUS SANTO ÂNGELO	
PROJETO:	ESTRUTURAL PRÉDIO SANITÁRIOS	ÁREA: 662,73 m²
CONTEÚDO:	VIGAS NÍVEL LAJE E COBERTURA	ESCALA: 1/50
PROPRIETÁRIO:	DATA: Março/2017	
RESPONSÁVEL:	DESENHO: Cristina	
PRANCHA: DET EST 06/19		